

HandKey® II

BIOMETRIC ACCESS CONTROL READER



The no-compromise security solution is at hand..

Recognition Systems, Inc. brings the true security and convenience of biometric technology easily within reach of most access control applications. The HandKey® II utilizes field-proven hand geometry technology that maps and verifies the size and shape of a person's hand all in less than one second.

The benefits of biometric security were once reserved for high security applications, but the HandKey II changes that. Tens of thousands of HandKeys are already installed in applications that range from health clubs and day care centers to laboratories and prisons. Its ease of use and reliability have made the HandKey the biometric standard for the access control industry. The lower cost of the HandKey II now makes the choice even easier.

The HandKey II provides the security and convenience you need at a price you can afford, even when compared to cardbased systems. Because your hand is your card, HandKey II allows access only to authorized people without the hassles of a card or key. By eliminating cards, you reduce administrative costs while greatly increasing the level of security. Users appreciate the convenience of never worrying about keeping track of a card or key.

FEATURES & BENEFITS

- REAL security
- Saves money over card-based systems
- Fast and easy to use
- Increases convenience by eliminating cards
- Integrates into existing systems
- Field proven reliable technology

Features and Options:

Door control and monitoring

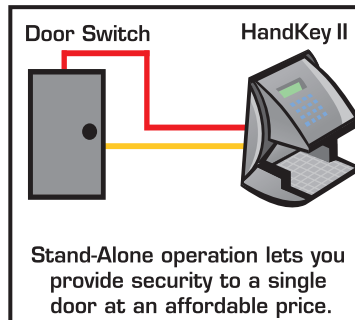
The HandKey II's design provides the ultimate in system reliability. Each HandKey II is a complete door controller providing door lock operation, request for exit, and alarm monitoring. All information, including biometric data and decision-making capability resides locally. This ensures your doors are secure and will continue to operate properly even if all communications to the main access control computer are lost.

Features of the HandKey II include:

- Door operation and monitoring
- Card reader input
- Request for exit
- Tamper switch
- Memory expansion from 512 (standard) to 32,512 users
- RS-232 printer output
- Stand alone or networked operation
- Card reader emulation mode
- Integrated wall mount design
- Multiple auxiliary inputs and outputs
- 62 user definable time zones
- Outdoor version available
- Optional modem or Ethernet module

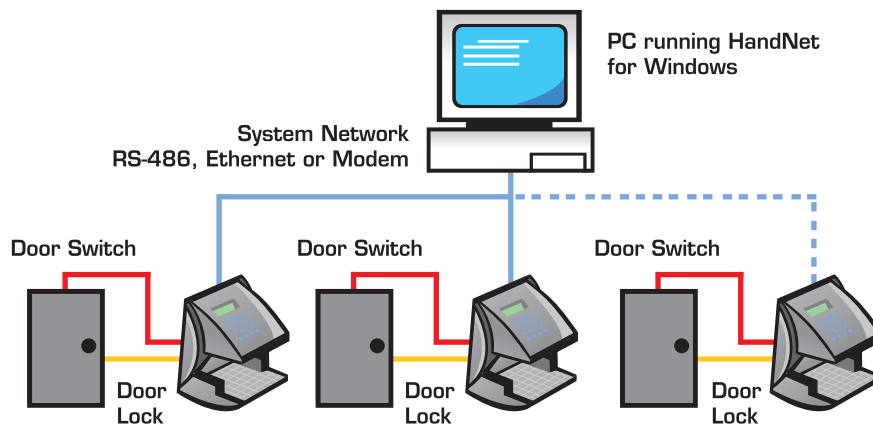
Stand-alone or fully integrated

Systems can be as simple as one unit on the computer room door to hundreds of units networked together. The HandKey II's card reader emulation mode makes adding it to existing access control systems fast and easy. A variety of communications options, including dial-up modems and Ethernet, allows you to design a system that's right for your facilities.



In a network

RSI's HandNet for Windows software links a virtually unlimited number of HandKey units into an integrated door access control system. All alarms and transactions report back in real time to the central computer, making door and alarm monitoring easy and efficient. Activity, user, and system reports can be easily generated. The central computer handles all hand template management automatically, allowing supervised enrollment at any reader and system-wide deletions. An optional internal modem lets you include remote site operations. Ethernet communication is also available.



SPECIFICATIONS

Part Number: HK-2

Size: 8.85 in (22.3 cm) wide
11.65 in (29.6 cm) high
8.55 in (21.7 cm) deep

Weight: 6 lbs (2.7 kg)

Power: 12 to 24 VDC or 12 to 24 VAC 50-60 Hz, 7 watts

Environment: Operating: 32°F to 113°F (0°C to 45°C)
Relative Humidity: 20% to 80% NC
Non-operating (storage):
14°F to 140°F (-10°C to 60°C)
Relative Humidity: 5% to 85% NC

Verification Time: Less than one second

Memory Retention: Up to 5 years via the standard internal lithium battery.

Transaction Storage: 5120 transactions

ID Number Length: 1 to 10 digits from keypad or card

User Capacity: 512 users expandable to 32,512 users

Template Size: 9 bytes

Communications: RS-485 (4 and 2 wire)
RS-232 Serial Printer Support
or network communications

Baud Rate: 300 to 28.8 Kbps

Card Reader Input: Proximity, Wiegand, Magnetic Stripe, Bar Code
(5 VDC provided by HandReader)

Card Reader Output: Wiegand, Magnetic Stripe, Bar Code

Duress Code: 1 leading digit (user definable)

Door Controls: Request to Exit input (switch or keypad), Door Switch input, Door Lock output (open collector, 5 VDC present, sinks to ground, 100 mA max)

Alarm Monitoring: Tamper, Door Forced, Duress

Event Monitoring: There are a variety of monitoring options including events such as: Invalid ID, Time Zone Violation, ID Refused, Try Again, Power Failure

Time Zones: 62 user definable time zones
Unlimited holidays

Auxiliary Outputs: 3 user definable (open collector, 5 VDC present, sinks to ground, 100 mA max)

Auxiliary Inputs: 2 user definable (open collector, 5 VDC present, sinks to ground, 100 mA max)

Options: BB-200 Operational Battery Backup
CR-2 Magnetic Stripe Card Reader
DC-102 Data Converter
EM-801 Memory Expansion - 9,728 users
EM-803 Memory Expansion - 32,512 users
EN-200 Ethernet Communications Module
KP-201 Auxiliary Keypad
MD-500 High Speed Internal Modem
PROX HID Proximity Reader
WAR-EXT 1 year extended warranty