

PROCONTROL® PayGate 4E-40 Coin-operated entrance turnstile



The PayGate 4E-40 is a turnstile, which is equipped with an automatic paying system. It means a good solution for paying at events, toilets, etc. **The PayGate 4E-40 is the combination of AutoPay 40 paying machine and ProxerGate 4E turnstile.** The coin case capacity allows at least 1500 passes without the need of the operator, so it can be placed in high traffic areas.

Technical features

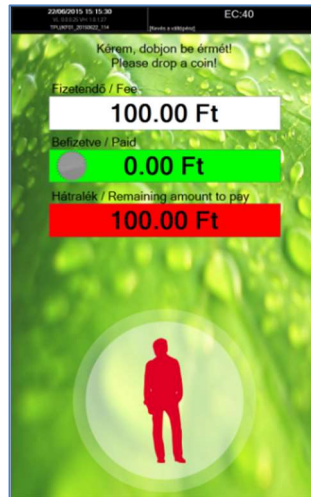
Type:	AutoPay 40
Bank note handling:	optional
Coin counting, accepting	Accepts different coins, it accepts HUF, optionally can be set to EUR too. e.g. 50, 100, 200Ft, 1EURO, 2 EURO
Gives change	Gives change, by default in 50 and 100 HUF coins. May be set to give change in EUR
Prints receipt, ticket	Thermal printer, delivered with 1pc 43 m long 60/60/12 mm (W/dia./reel) thermal paper roll, which keeps content for 8 yrs. and enough for about 400 tickets/ receipts
Paper cutter (Guillotine 95%)	✓
8" touchscreen	✓
NFC RFID (proximity) chip card reader	✓
Barcode reader	optional
Magnet strip (bankcard) reader	-
Banknote container:	optional
Capacity of banknote container	~ 500 pcs
Coin container	Steel cassette

Capacity of coin container	~ 1500 use with one clearing
User detection	optional
Sensor	at 2 spots in ProxerGate turnstile
Camera	-
Interface	optional (RS-485, Ethernet, RS-232)
Design	indoor, can be integrated with turnstile, can be wall-mounted
Lock:	1 pc
Power supply:	12V DC, 10A
Power consumption:	Approx. 0,8 W / hour, at issuing 250 tickets/ day
Environmental temperature resistance	from -20 C° to +60C°, at storage from 0C° to +40C°
Rel. humidity	Max. 80%, (not moisture condensation)
Basic design	RAL9003 signal white fiberglass, with brushed stainless steel and with powder-coated housing

AutoPay40 user guide

Passing through the paying gate – for paying guests

This is the welcome screen of the display.



1. Insert the sum into the coin slot

On the touchscreen you can see the amount already paid in and the sum still to be paid

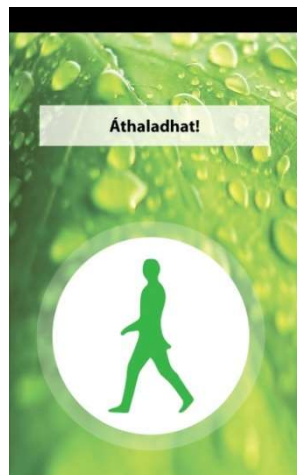
2. At overpay, get the change from the slot.



3. Wait for the printed receipt
(At machine types with printer)



4. When the green signal appears on the touchscreen, pass through the gate



Please do not push, pull or tug the turnstile before inserting the coin into the machine!

If the specified amount was paid and no person passed through, the gate reserves the possibility for about 2 minutes. Meanwhile it gives signal sound and moves the turnstile back and forth. After two minutes the gate gets back to normal operation.

Passing through the paying gate – for employees, free of charge (optional)

In case the “free entry for employees at the RFID/NFC reader optional function” has been ordered, the RFID proximity cards will be set that showing them at the RFID/NFC reader, the employees may go through the gate free of charge. Later on, the persons with administrator cards can add new cards into the system (see Service menu2).

For operating the machine you will need:

- Thermal paper for printing
- Change (coins)
- Power supply (12V, UPS)

Highly recommended:

- Internet connection for software upgrades and remote service

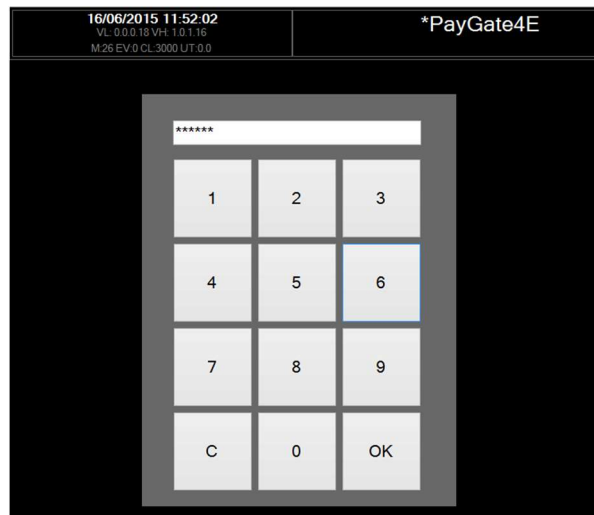
Service Menu

You can access the operator, administrator functions and commands from the Service menu.

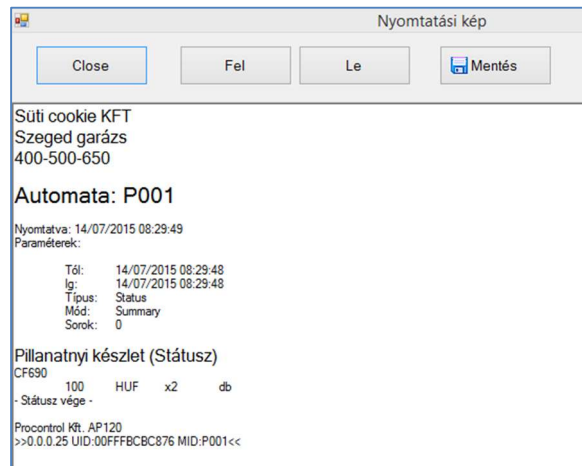


Accessing the Service menu happens in the following way:

- Admin proximity card: hold the proximity card to the RFID/ NFC reader at the upper right corner of the machine
- PIN code: Double tap on the clock in the upper left corner of the screen, and enter the PIN in the window popped up and tap OK. There are two distinct PINs for the service menu – with the shorter one you may access the green options, with the longer one you can access the entire service menu.

**Menu:**

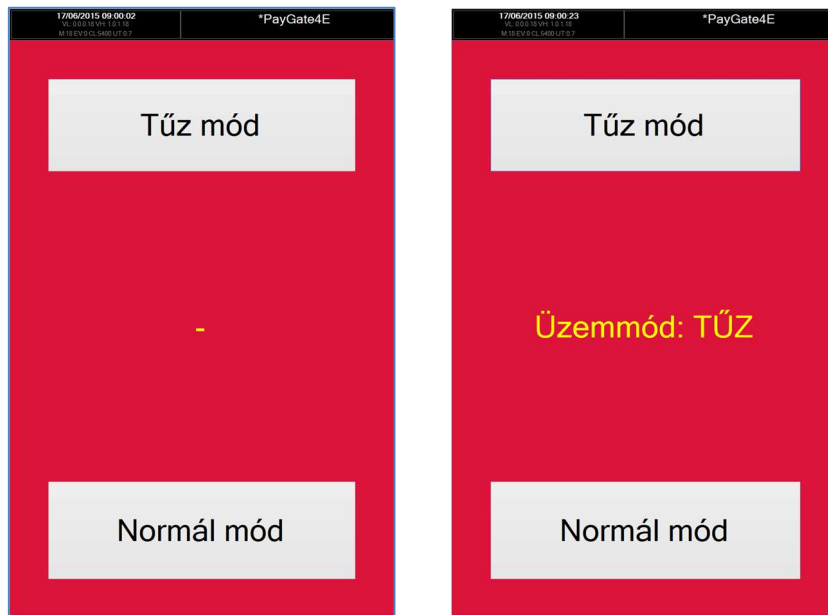
- BA Logging off the Service menu: you can get back to the welcome screen
 - CE Deleting error: deletes error message displayed on the welcome screen
 - F0 Start loading cash storage: refilling the machine with change
 - FE Stop loading cash storage: refilling stops, receipt will be prepared
 - E2 Emptying storage boxes: unloading the storage boxes partly, regular unload is suggested. Receipt is prepared, and then you have to unload the storage.
 - E3 Empty change into the repayment port: It may happen that more coins get disbursed than the capacity of the repayment port – pay attention during the emptying process, and clear the port continually. Otherwise, the coins may push the protective glass to the house of the machine and the port becomes inaccessible.
 - EA Start complete emptying of the cash storage: from the common storage and optionally the banknote container you take off the money, the machine itself unloads the rest.
- After the complete clear off the storage do not forget to refill the storage with change so the machine would be able to give change.
- SY Data synchronization: synchronization with the central database server (optional)
 - Printing detailed report: Marking this option any report gets printed in a detailed version. (Before printing please check the paper roll, as this report might be some meters long.)
 - Printing to screen: Marking this option, the result of any report appears on the display only. The print preview can be saved in .rtf format with tapping the Save button.



- ST Printing status: printing summation per denomination
- FM Turnover statement, previous month
- FJ Turnover statement, current month
- FA Turnover statement, current day
- LU Live Update: reload at active Internet connection. Wait until the welcome screen appears again.
- KL Low level restart: restart
- EX Exit from the program
- SE Start Explorer: Launch Windows file manager in the background
- ER emergency opening menu: one arm of the turnstile can drop down in case of emergency. To have the arm dropped tap the Fire mode, and the turnstile rotates its arms to the suitable position and drops the arm to ensure free exit.

After the emergency opening, fold back the arm dropped, and tap the Standard mode button to get back to the welcome screen.

You may read more on the ProxerGate turnstile in its own documentation. The gate can be connected to fire alarm system and drop its arm to a signal from the alarm system.



- S2 Menu 2: the second part of the service menu with further options

Service menu 2

In the Service menu 2 you can get to further functions and commands to fulfill operator, administrator tasks.

Szerviz menü 2

SV Szerviz menü 1
BA Kilépés a szerviz menüből
OS Keyboard

TV TeamViewer

Dátum és idő módosítás

Óra	Perc	Másodperc	Év	Hónap	Nap
+	+	+	+	+	+
12	50	49	2015	7	21
-	-	-	-	-	-

Beállít
21/07/2015 12:50:49
Mégsem

Kapunyító kártyák

Kártyaszám:

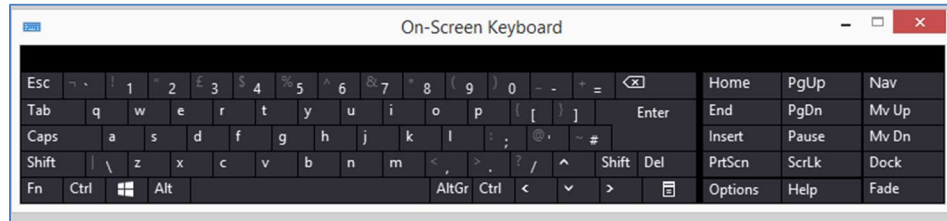
<- Hozzáad

Használhatja az olvasót is, akkor nem kell beírni a számot.

Töröl

Menu:

- SV Service Menu 1: back to the Service Menu
- OS Keyboard: keyboard appears on the screen



- TV TeamViewer: for remote control
- Modifying date and time: with the '+' and '-' buttons set the current time, and tap the Set button. In case you do not wish to finalize the time setting, tap the Cancel button, and the time is set back to the last saved status.
- Access cards: The proximity cards/ bracelets for employees can be registered here. Type in the card number to the Card number field with the keyboard or use the reader of the machine. Then tap the Add button.
Choosing a card number and tapping the Delete button you may delete a card you do not wish to use anymore.