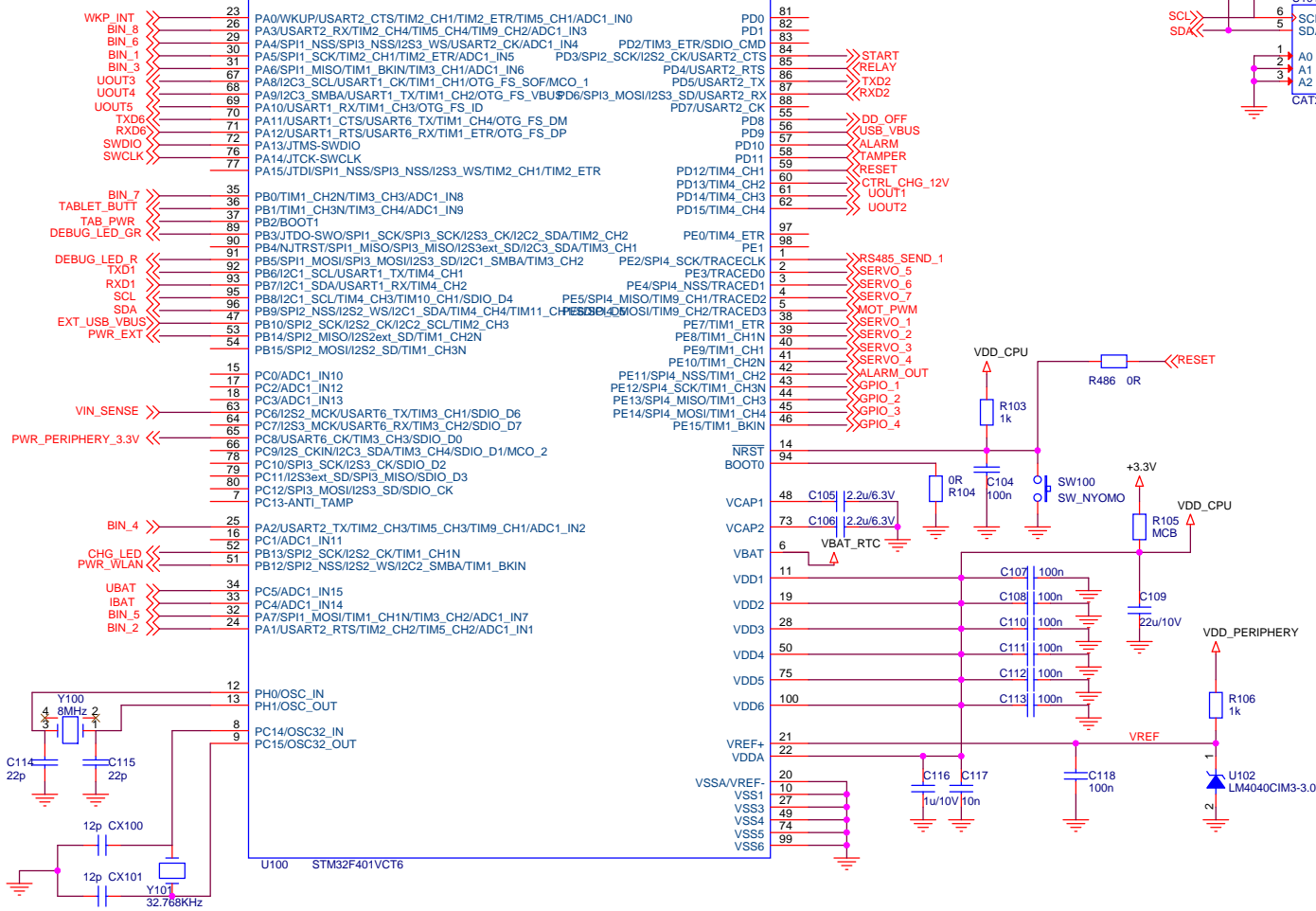
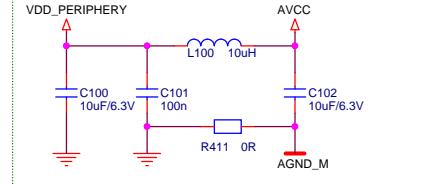


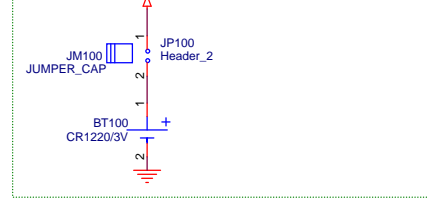
# CPU



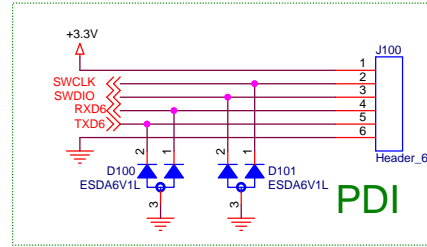
## AD\_FILTER



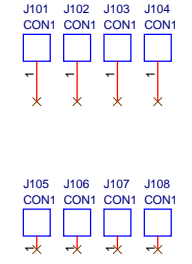
## RTC\_BATT



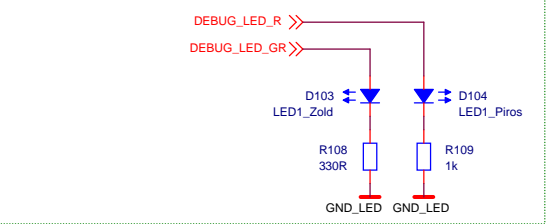
## PDI



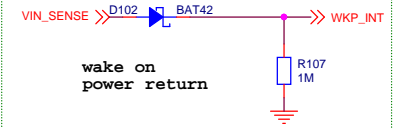
## X



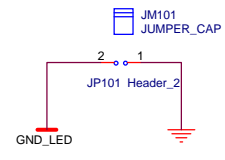
## CPU\_DEBUG



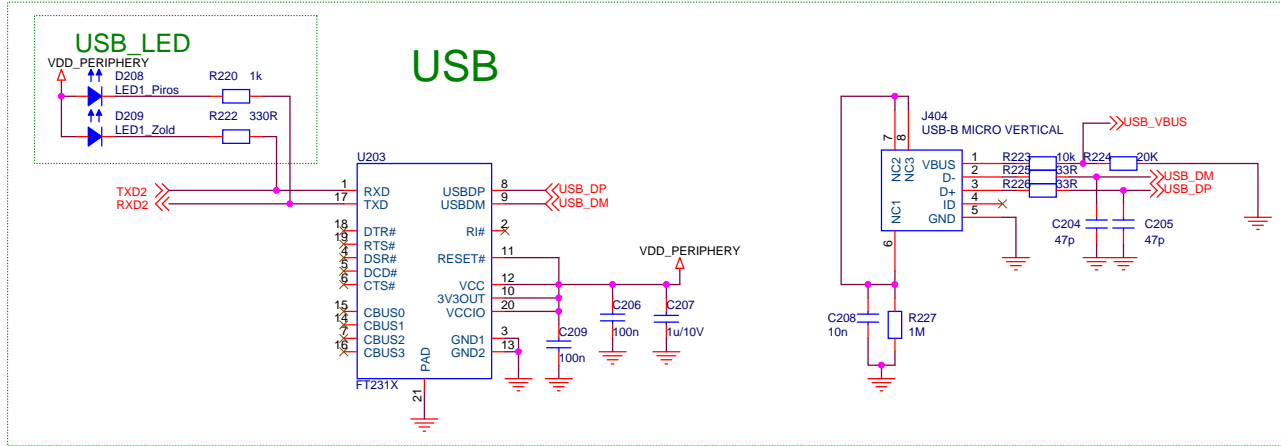
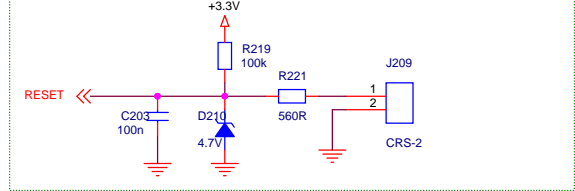
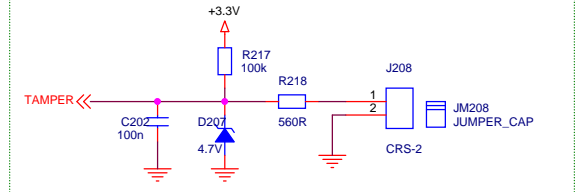
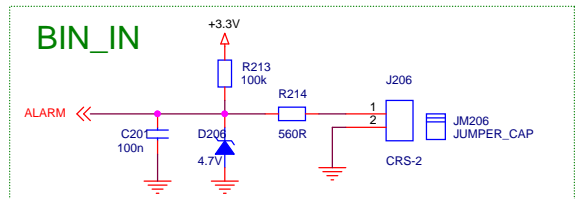
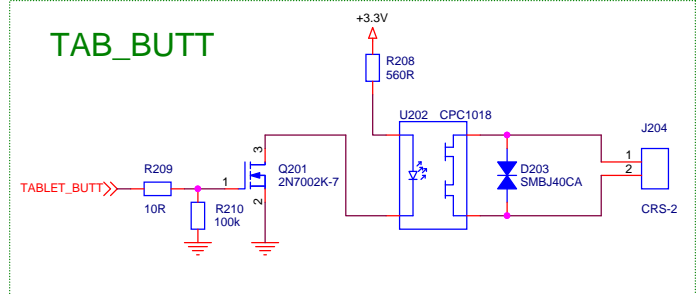
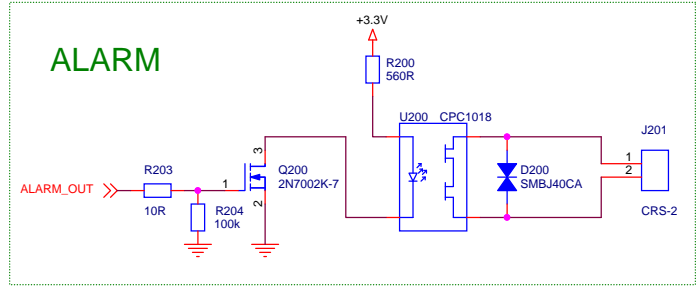
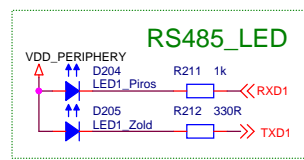
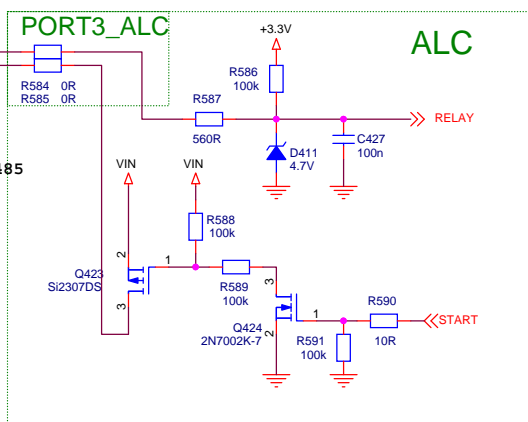
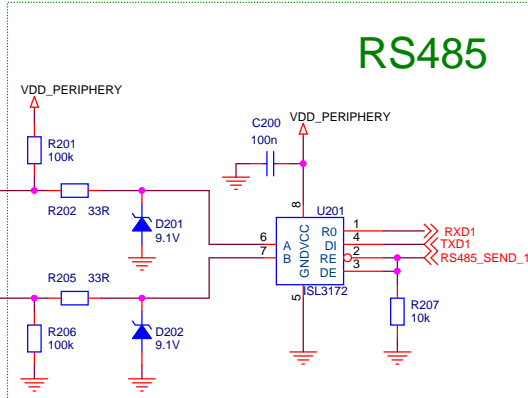
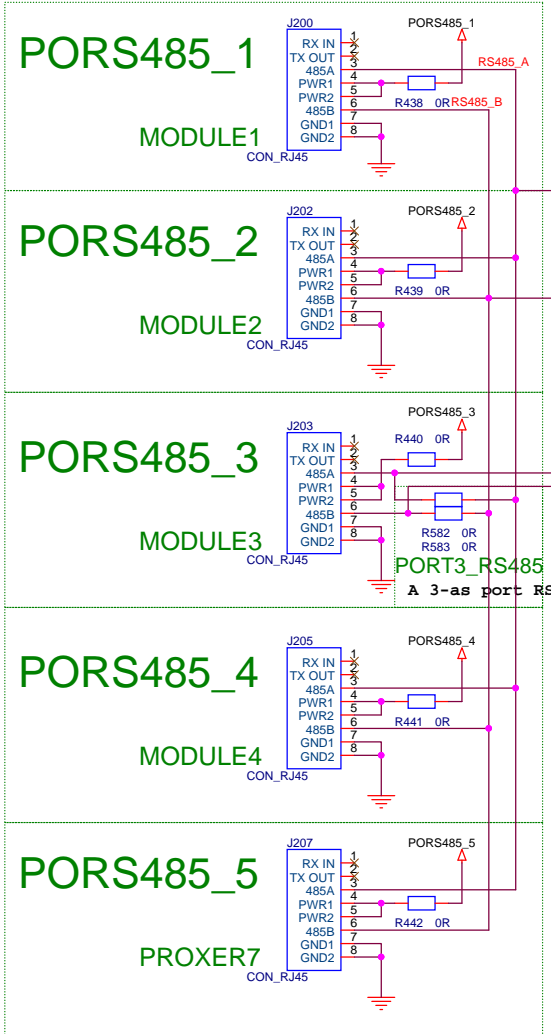
## INT



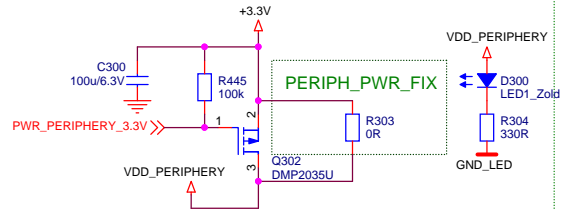
## CPU\_DEBUG



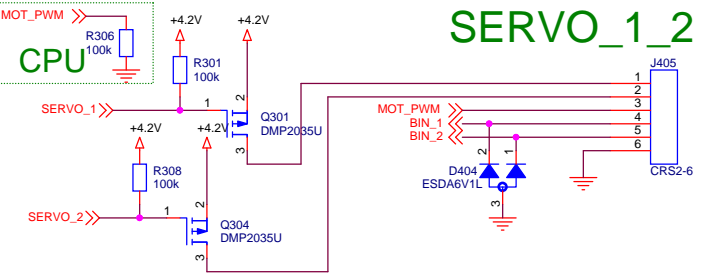
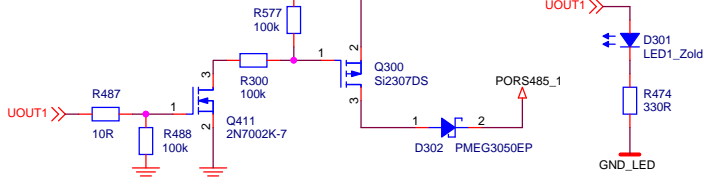
Title			ProxerSafe Box Rack controller - CPU
Size	Document Number	Rev	
A3	1847-17	2	
Date:	Wednesday, February 08, 2017	Sheet	2 of 5



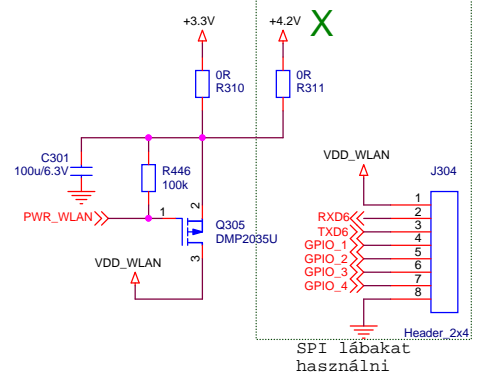
## PERIPH\_PWR\_SW



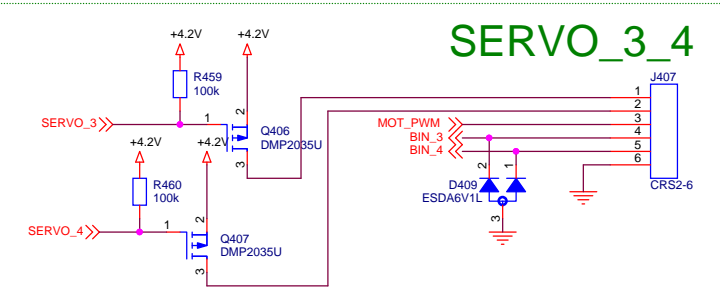
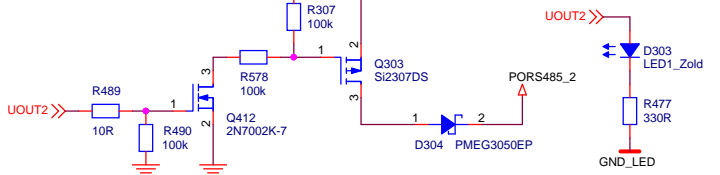
## PORS485\_1



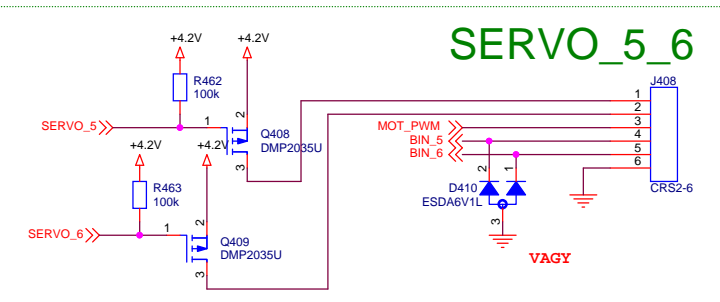
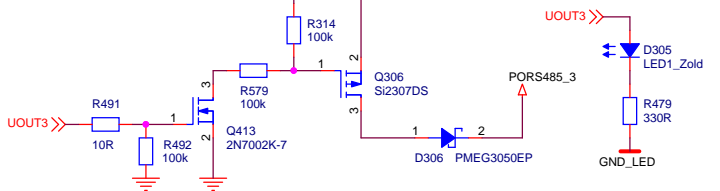
## WLAN



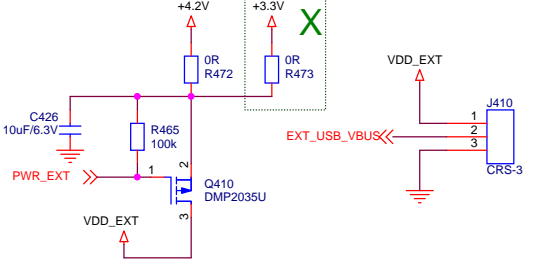
## PORS485\_2



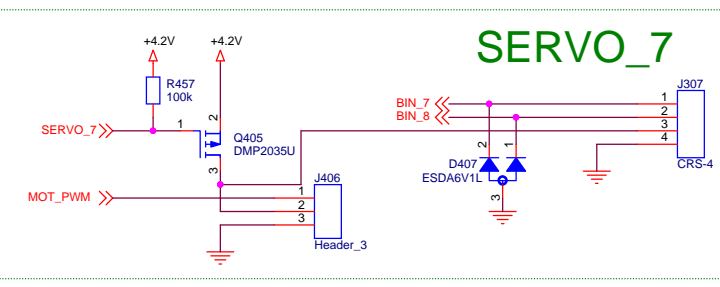
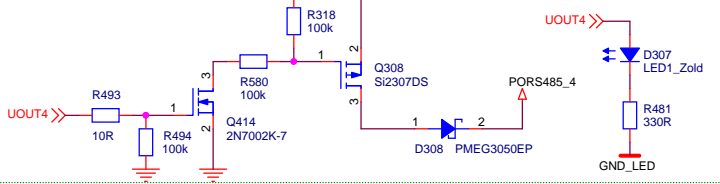
## PORS485\_3



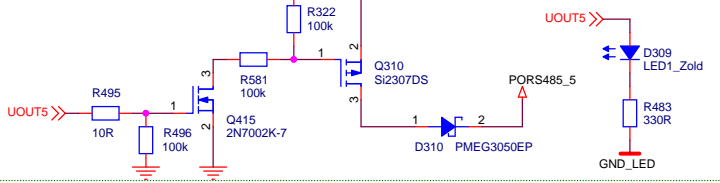
## EXT\_PWR



## PORS485\_4

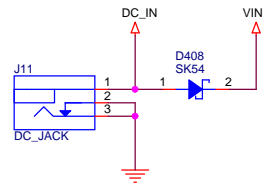


## PORS485\_5

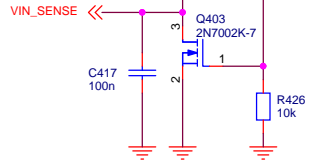


# VIN

15V/3A  
30V/2A  
DC IN

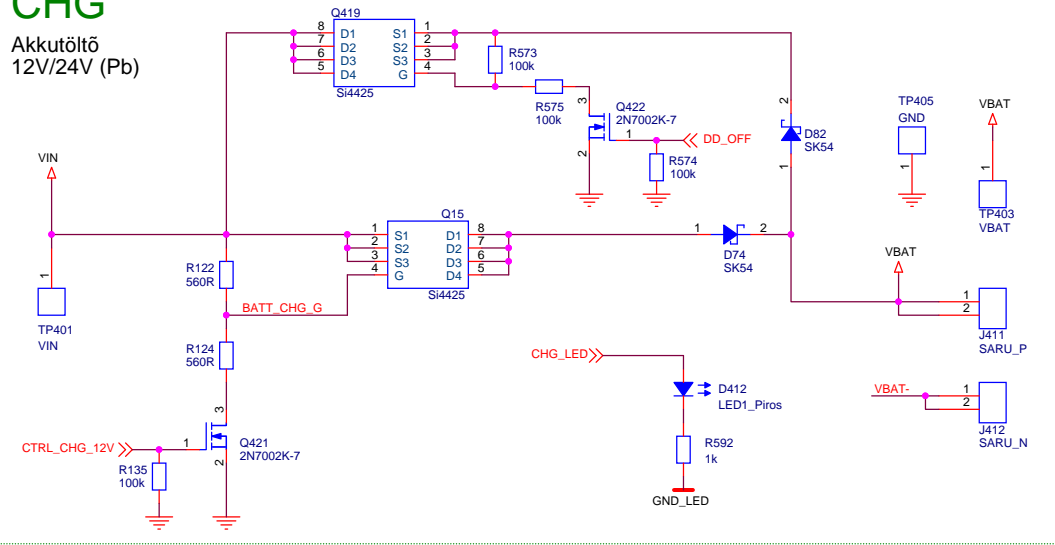


# VIN\_SENSE

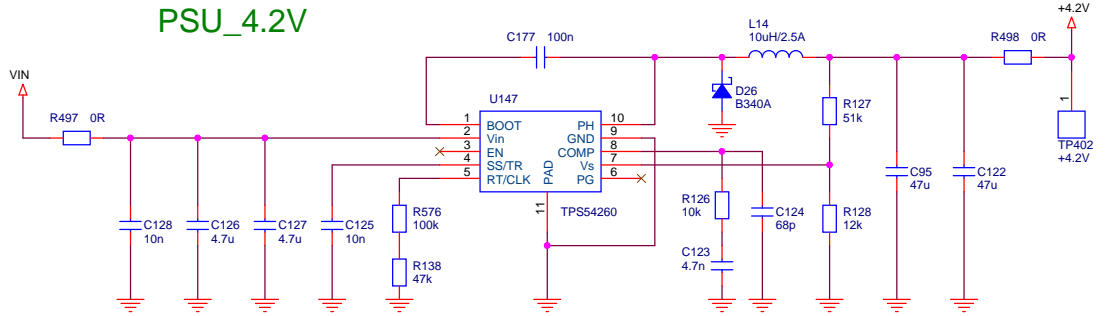


# CHG

Akkutöltő  
12V/24V (Pb)



# PSU\_4.2V

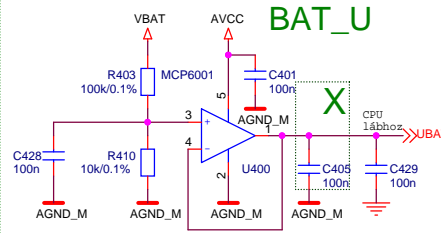


A GND láb direkt legyen bekötve a PAD-ba az IC alatt. A PSU alatt telefeld legyen, és a PAD alatt sok via. Hődiszippálásra legyen nagy földfelület! A tekercs és a dióda a lehető legközelebb kerüljön a PH lábhoz. Az RT ellenállások a lehető legközelebb legyenek az IC-hez és az IC alatti GND-hez szorosan kapcsolódjanak.

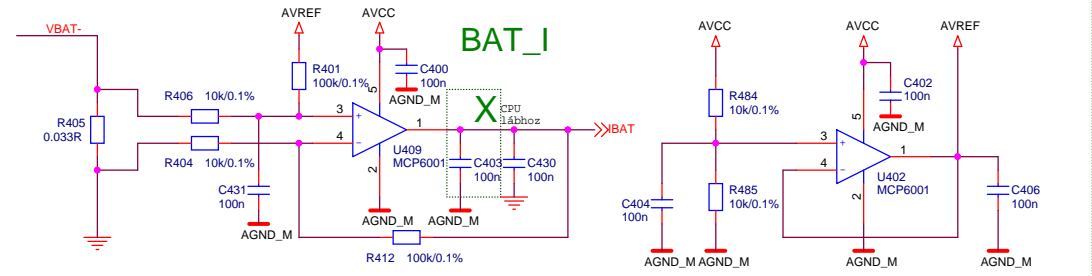
Layout: <http://www.ti.com/lit/ds/symlink/tps54260.pdf> - 40.oldal

Az egyéb kondik 25V-osak legyenek  
A bemeneten 50V-os kondik legyenek  
A kimeneten 6.3V-os kondik legyenek.

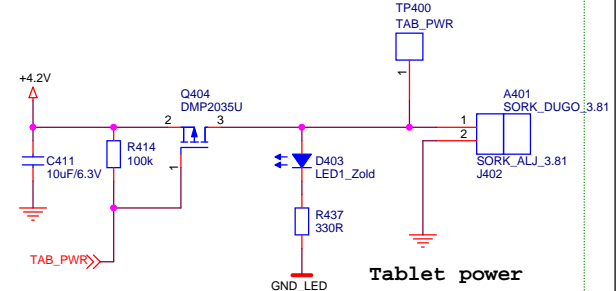
# BAT\_U



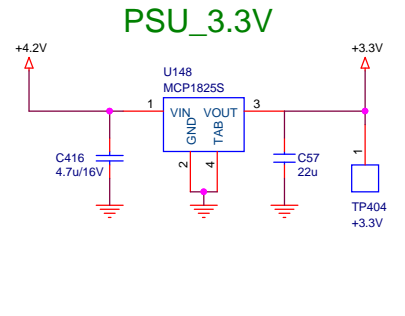
# BAT\_I



# TAB\_PWR



# PSU\_3.3V



File		
ProxerSafe Box Rack controller - Power		
Size	Document Number	Rev
A3	1847-17	2
Date:	Tuesday, February 07, 2017	Sheet 5 of 5